



# Advancing Precision Medicine for Health Equity

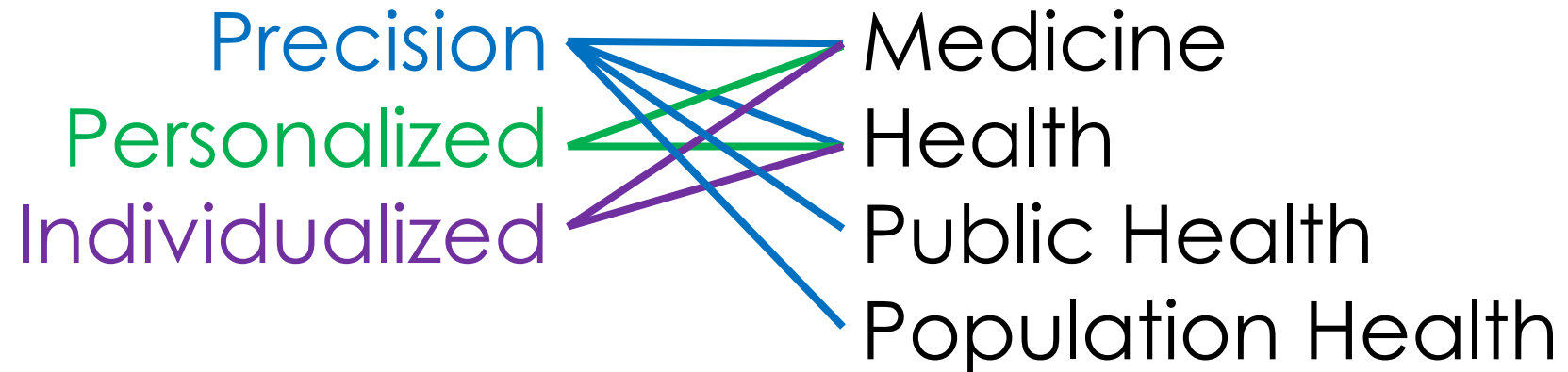
Julianne McCall, PhD

Director of Precision Medicine

California Governor's Office of Planning & Research

# Precision Medicine is

also known as



# Tailoring of medical treatment to the individual characteristics of each patient

Traditional “One-Size-Fits-All”  
Approach



Precision Medicine  
Approach



# The Precision Medicine Spectrum

Sequencing  
a tumor

Not giving a  
medication that  
needs to be  
refrigerated to an  
unhoused person

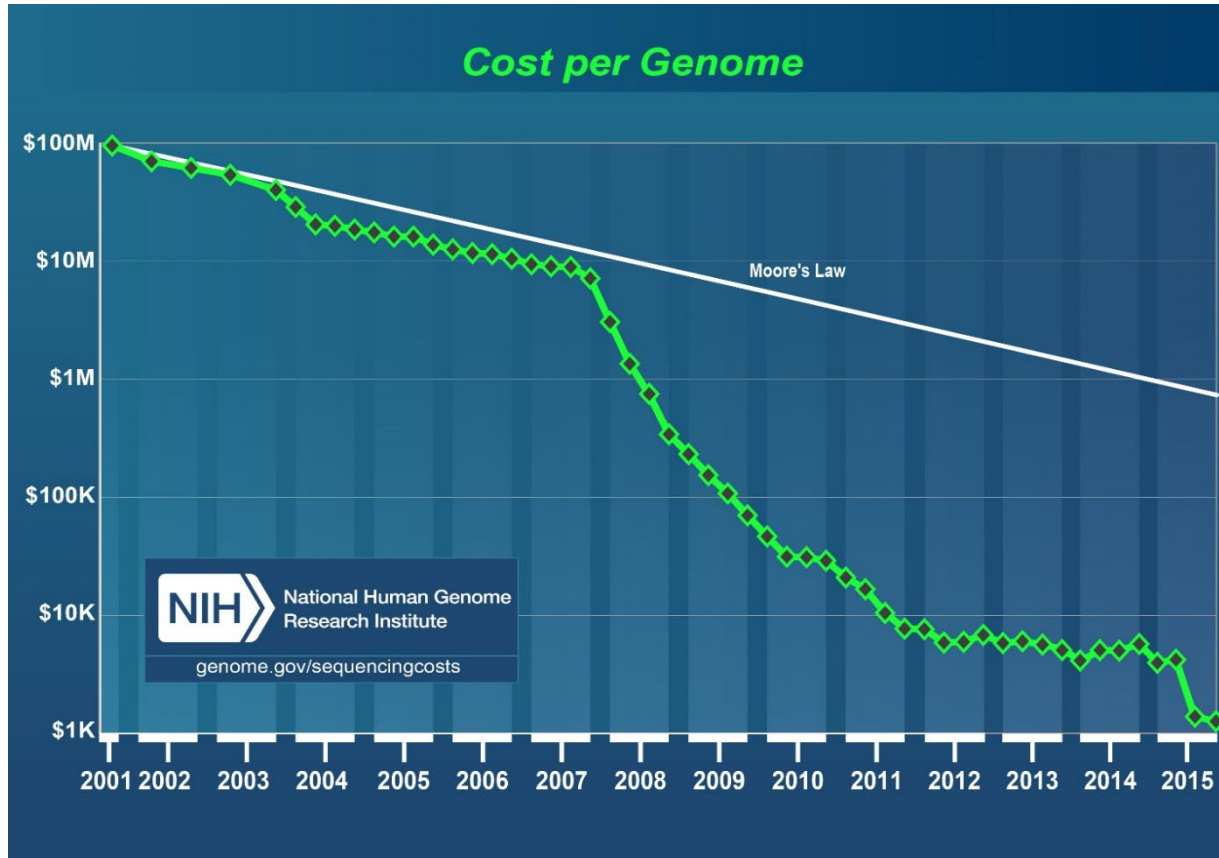


# Health is complicated

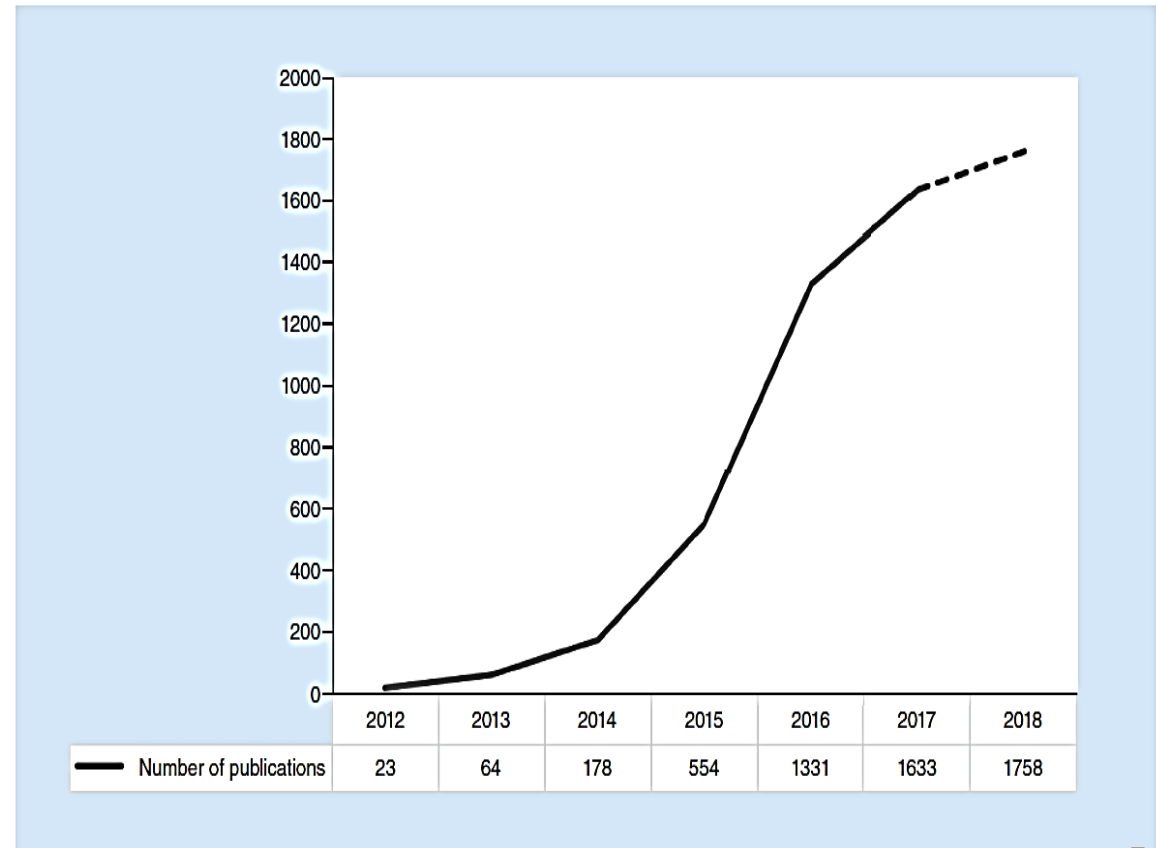


Source: Kevin Patrick, MD, MS, UCSD

# Why now?



Lower costs = greater access



Exponential increase in research activity



# Social Determinants of Health



Economic Stability	Neighborhood and Physical Environment	Education	Food	Community and Social Context	Health Care System
Employment	Housing	Literacy	Hunger	Social integration	Health coverage
Income	Transportation	Language	Access to healthy options	Support systems	Provider availability
Expenses	Safety	Early childhood education		Community engagement	Provider linguistic and cultural competency
Debt	Parks	Vocational training		Discrimination	Quality of care
Medical bills	Playgrounds	Higher education		Stress	
Support	Walkability				
	Zip code / geography				

**Health Outcomes**  
 Mortality, Morbidity, Life Expectancy, Health Care Expenditures, Health Status, Functional Limitations





# California Initiative to Advance Precision Medicine

- Established in 2015
- \$65 million state investment
- \$36.5 million nonstate matching funds and leveraged resources
- Grantmaking for research projects
- Cross-sector and interagency partnerships
- **Mission to reduce health disparities**





# State-Funded Research Projects

- Focus on **cross-sector partnerships** between researchers, communities, health care providers, industry, and others
- Strong emphasis on **community-researcher collaborations** to ensure research results are aligned with California communities' priorities

## Completed

- Pediatric Cancer
- Multiple Sclerosis
- Infectious Disease
- Mobile Health and Depression
- Heart Disease
- Traumatic Brain Injury
- Prostate Cancer
- Genomic Disease

## Current

- Cancer Disparities
- Adverse Childhood Experiences



# The Collaborative Approach to Examining Adversity and Building Resilience (CARE)

Lead PI: Dr. Neeta Thakur

Collaborating Institutions: UCSF Benioff Children's Hospital Oakland, University of California, Santa Barbara, Futures Without Violence

---

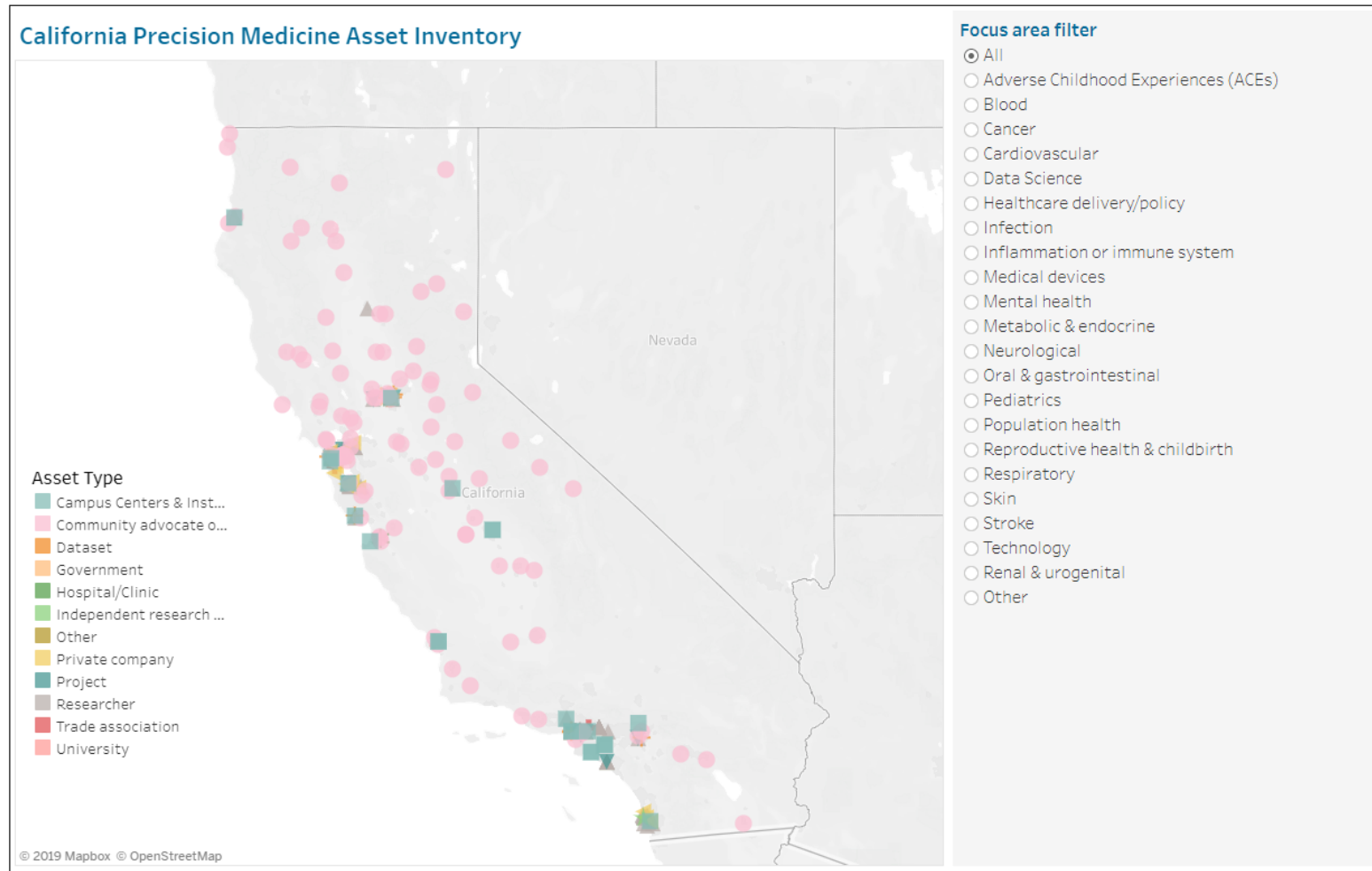
## Aims

---

- Help understand which children are most vulnerable to the effects of ACEs, what family and community-level factors provide the most buffering protection, and which interventions most improve child and family outcomes
- Personalize interventions to fit individual physiology and environmental circumstances



# California Precision Medicine Asset Inventory



# California Precision Medicine Asset Inventory

Home Page    Definitions    Add or Edit an Entry

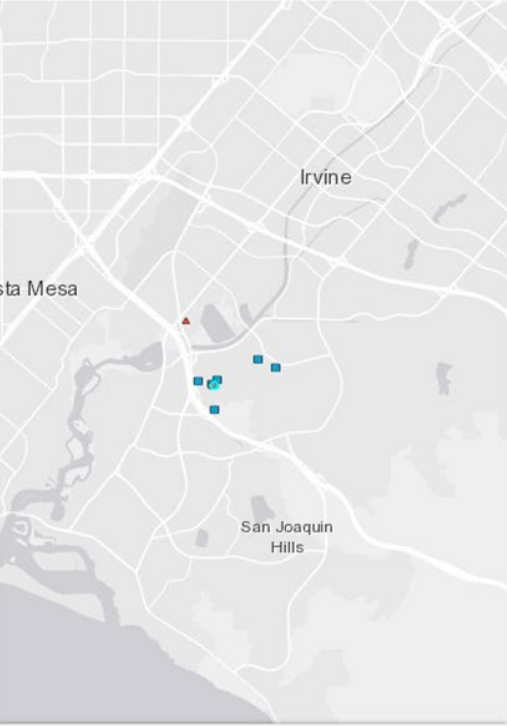
Activities: Advocacy/Policy/Consulting  
Health Topics: ACEs

**Rural Health Equity and Learning Collaborative**  
Website a Research Center in Bakersfield, CA  
Activities: Research  
Health Topics: ACEs

**ACE Overcomers: The Center for Resiliency & Trauma-Informed Training**  
Website a Community-Based Organization in Merced, CA  
Activities: Advocacy/Policy/Consulting

**County Welfare Directors Association**  
Website a Trade Association in Sacramento, CA  
Activities: Advocacy/Policy/Consulting, Education/Outreach  
Health Topics: ACEs

**ACEs Connection**  
a Community-Based Organization in Manteca,



Irvine  
San Joaquin Hills  
Santa Mesa

**Sue & Bill Gross Stem Cell Research Center**, Research Center in Irvine, CA  
[https://stemcell.uci.edu/researcher\\_landing.php](https://stemcell.uci.edu/researcher_landing.php)

Project

Trade Association

Public Agency

Hospital/Clinic

**Activity**

Research

Direct Support

Education/Outreach

Advocacy/Policy/Consulting

Research Tools

Clinical Care

Granting/Philanthropy

Venture Capitalism

Other Activity

Infectious Disease

Inflammation and Immune System

Neurology

Mental Health

Metabolic and Endocrine

Oral and Gastrointestinal

Pediatrics

Population Health

Reproductive/Urogenital Health

Respiratory

Sequencing

Skin

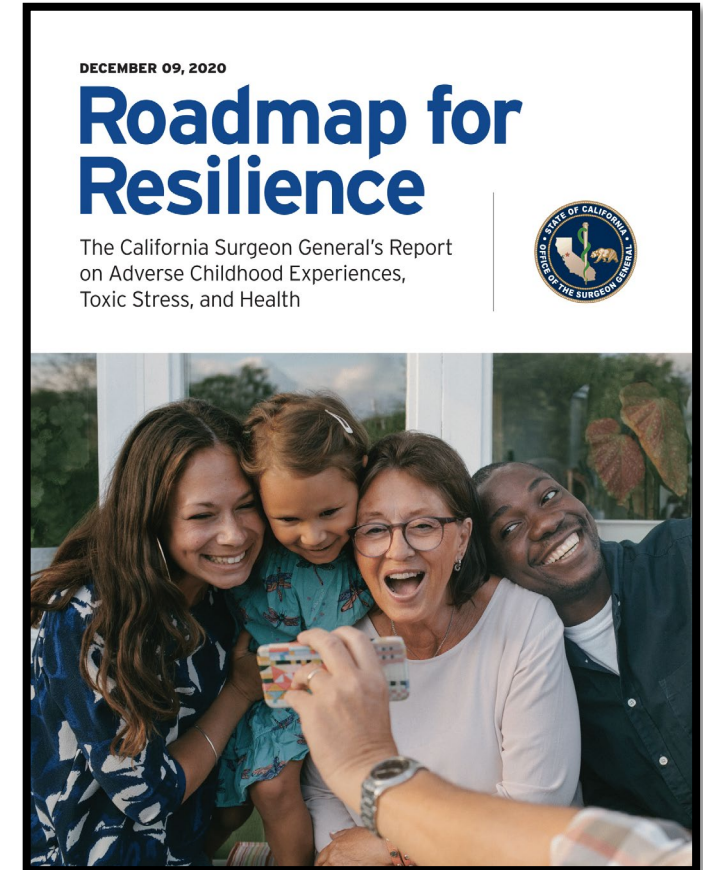
Technology, Pharmaceuticals, and

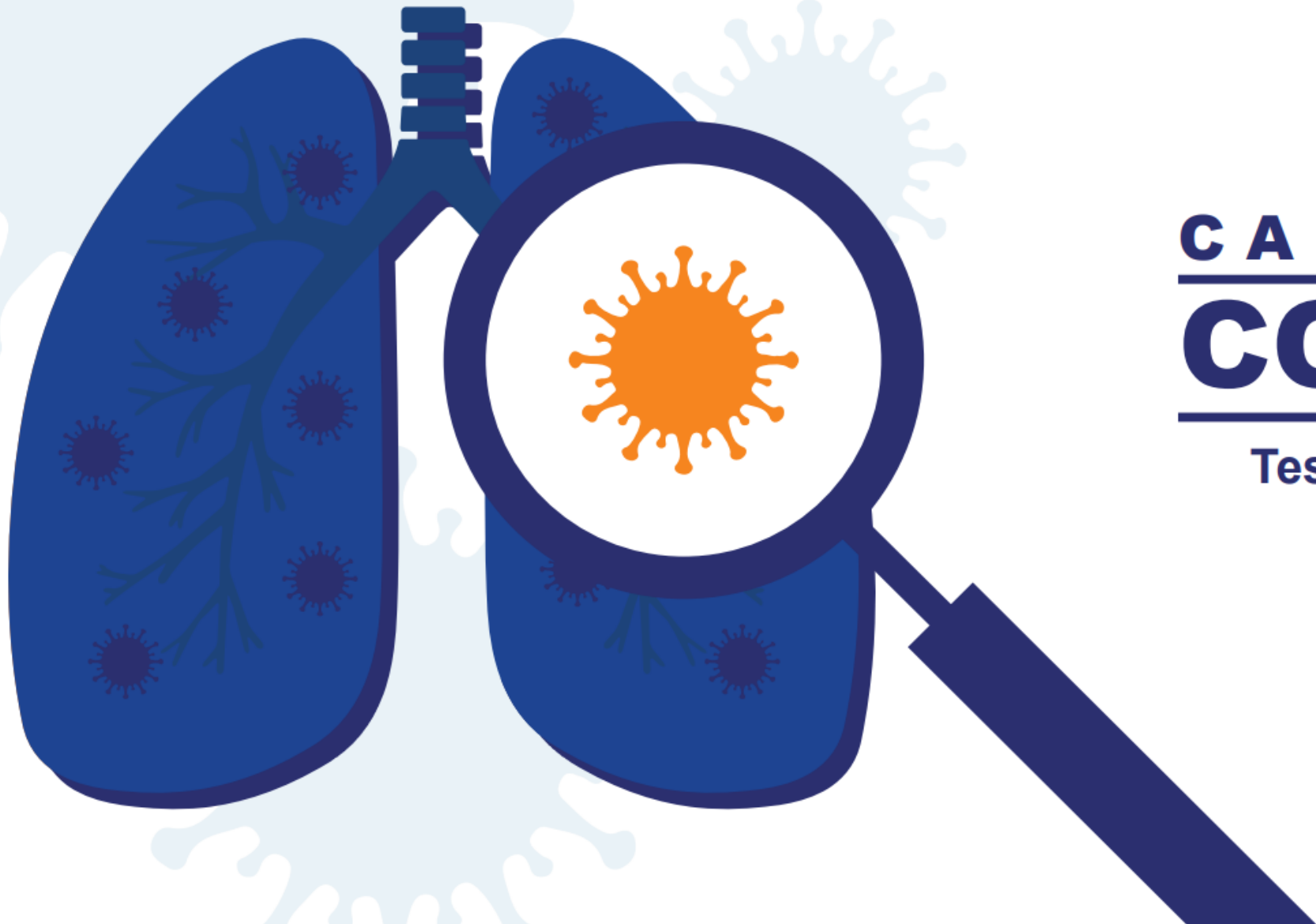


# Interagency Coordination



- Surgeon General's Trauma-Informed Primary Care Advisory Committee
- Governor's COVID-19 Testing Task Force
- CDC-CDPH Essentials for Childhood Initiative
- California Health in All Policies Task Force
- MHSOAC Cooperative Listening Sessions





**CALIFORNIA**  

---

**COVID-19**  

---

**Testing Task Force**

# New in 2023: Depression Research Program



California Initiative to Advance  
Precision Medicine



**\$10 million**

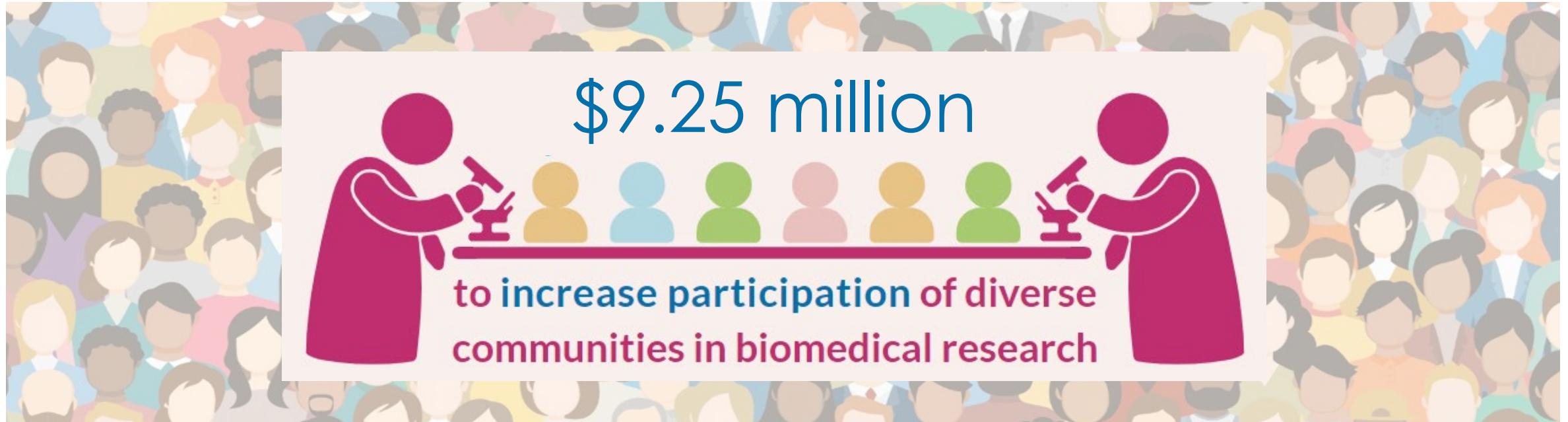
**to advance prevention,  
diagnosis, and treatment  
of depression**



Mental health care for *individuals*, not an “average” patient

1. 3-5 research projects
2. Co-led by academic research institutions and CBOs / patient groups
3. 36 months, with progress reports and an expert evaluation

# New in 2023: Equitable Participation in Research



Ensure medical progress benefits *all* Californians by:

1. Launching a cross-sector public-private collaborative to improve outreach strategies for research participation
2. Engaging more researchers from underrepresented backgrounds
3. Advancing the science of community engagement in research





# ARPA-H Nationwide Health Innovation Network

The new U.S. Advanced Research  
Projects Agency for Health



# President Biden's vision

"ARPA-H will pursue ideas that break the mold on how we normally support fundamental research and commercial products in this country."

- President Biden Remarks, March 18, 2022



**DELIVERING BIPARTISAN PROGRESS**  
THROUGH PRESIDENT BIDEN'S UNITY AGENDA

- ✓ Made it easier for doctors to prescribe effective treatments for opioid addiction
- ✓ Passed a gun safety law making historic investments in youth mental health
- ✓ Launched ARPA-H to drive breakthroughs in the fight against cancer, Alzheimer's, and diabetes
- ✓ Expanded benefits and services for veterans and their survivors

WH.GOV/SOTU

# Mission

**Accelerate better  
health outcomes  
for everyone.**



# The Challenge

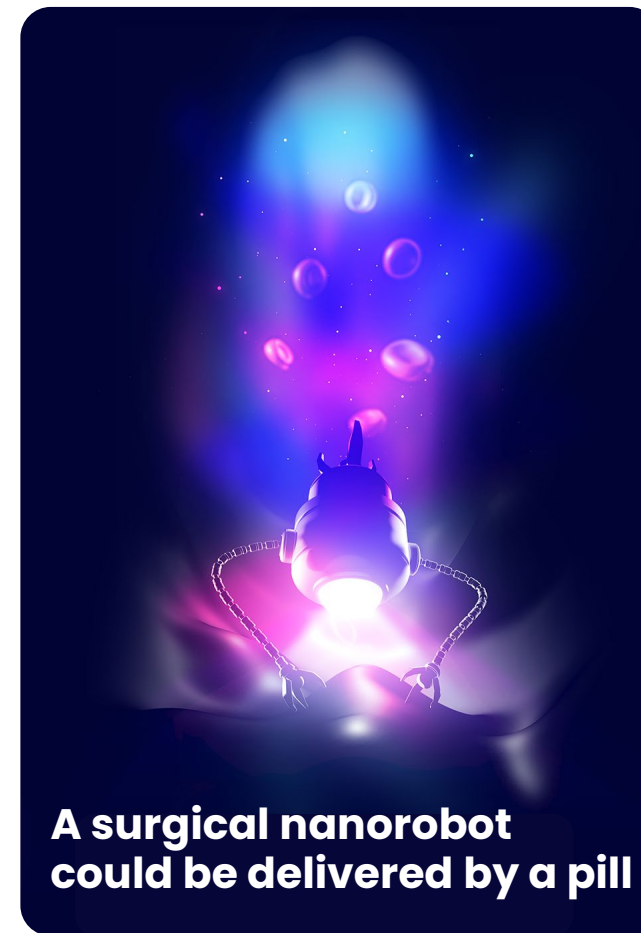
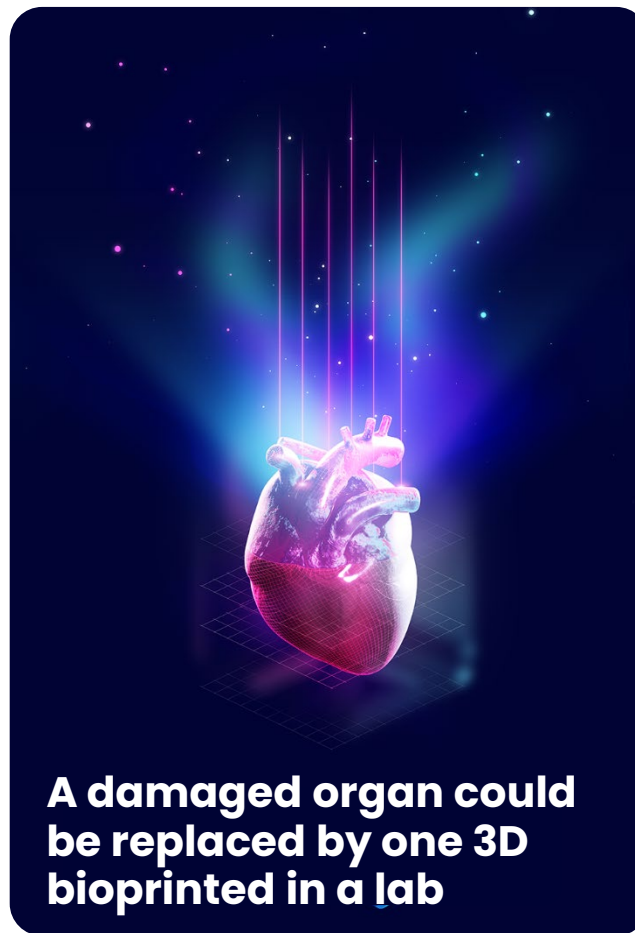
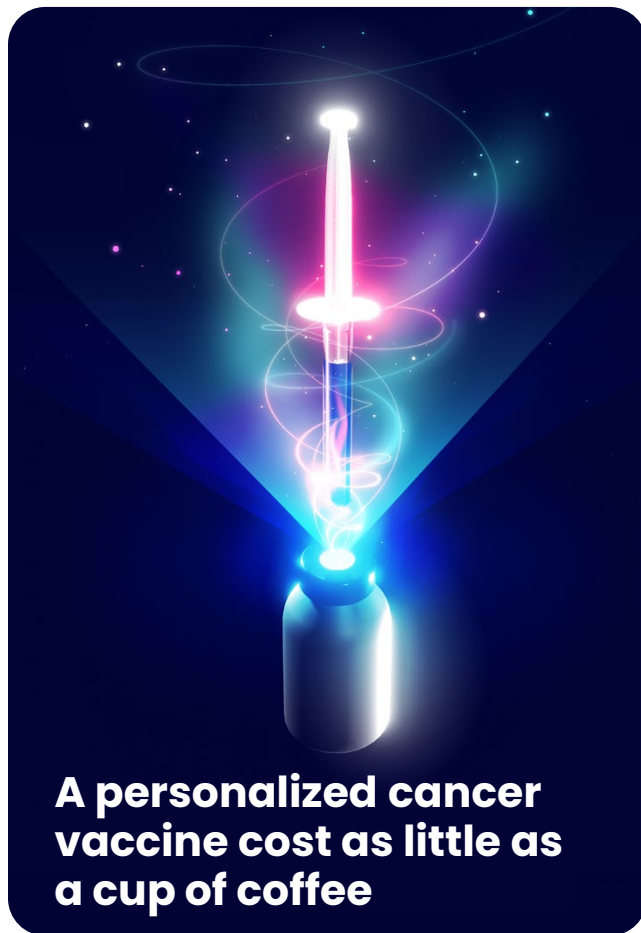
Many Americans live **too far from healthcare centers.**

Biotech centers aren't **co-located with customers that need treatment the most.**

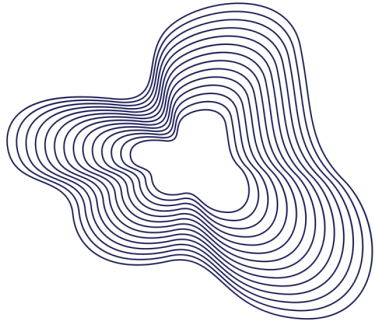
Numerous diseases **disproportionately impact vulnerable populations.**



# Imagine if...



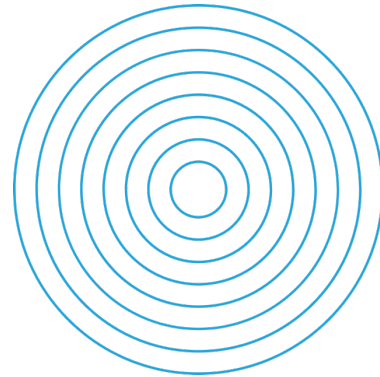
# Initial Mission Focus Areas



## Health Science Futures

Expanding what's technically possible

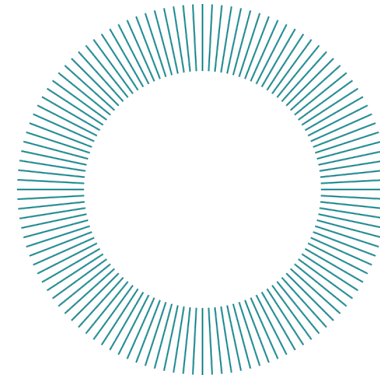
Accelerate advances across research areas and remove limitations that stymie progress towards solutions. These tools and platforms apply to a broad range of diseases.



## Scalable Solutions

Reaching everyone quickly

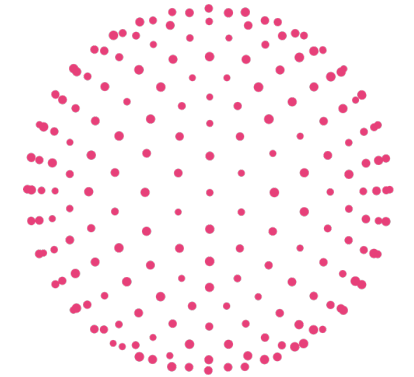
Address health challenges that include geography, distribution, manufacturing, data and information, and economies of scale to create programs that result in impactful, timely, and equitable solutions.



## Proactive Health

Keeping people from being patients

Preventative programs will create new capabilities to detect and characterize disease risk and promote treatments and behaviors to anticipate threats to Americans' health, whether those are viral, bacterial, chemical, physical, or psychological.



## Resilient Systems

Building integrated healthcare systems

Create capabilities, business models, and integrations to weather crises such as pandemics, social disruption, climate change, and economic instability. Systems are sustained between crises—from the molecular to the societal—to achieve better health outcomes.

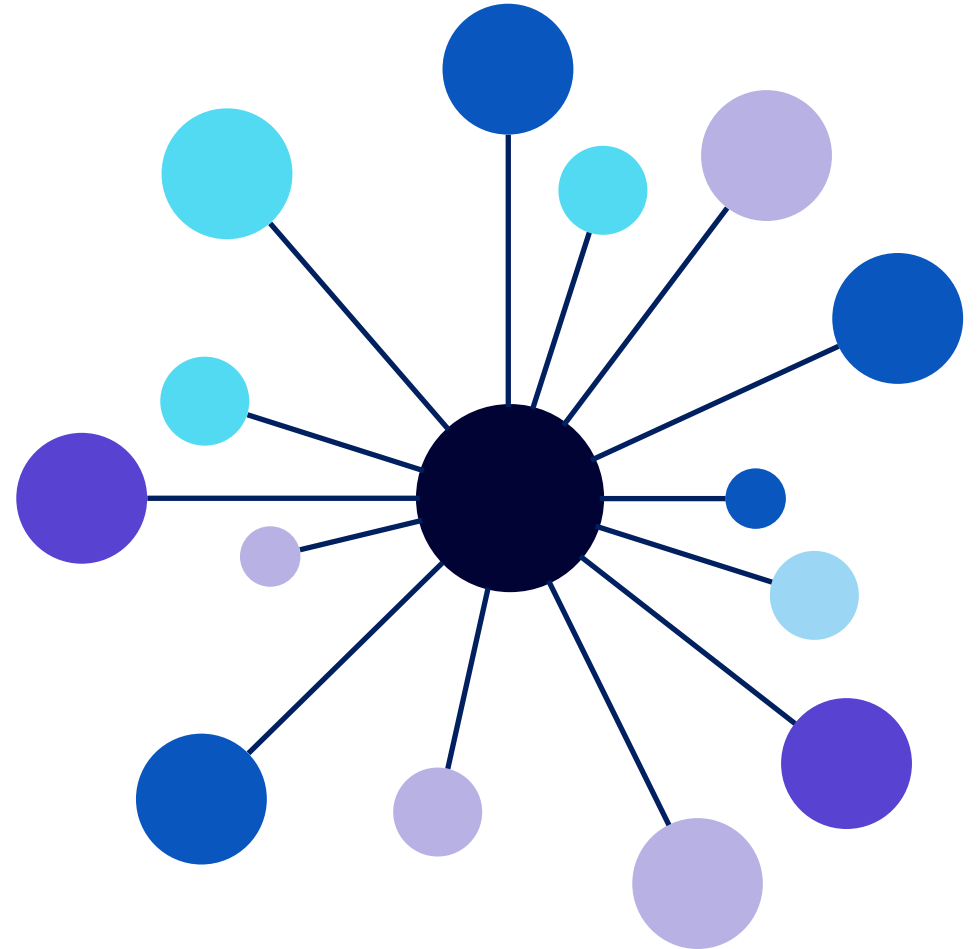
# The Hub and Spoke Model

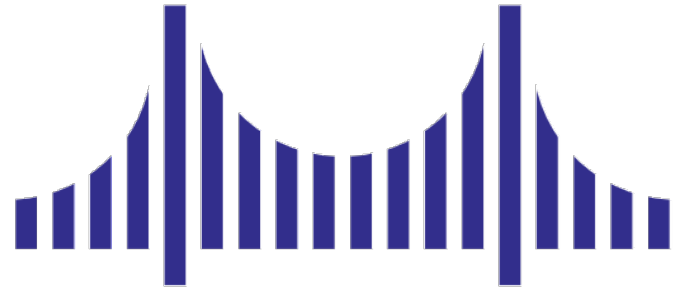
To create a national health innovation network

The **2023 Consolidated Appropriations Act** directs the agency to establish sites in **at least three geographic areas**.

The hub and spoke model will form a **network of people, institutions, and capabilities** across the country.

- **Hub:** To ensure the active transition of health innovation in an expedient, cost-effective, accessible and sustainable manner that reaches all Americans.
- **Spoke:** To ensure that Americans in every community benefit from ARPA-H solutions. Spokes are connected to appropriate hubs on an ongoing basis.





# Health **BRIIDGE**

Bringing Research, Innovation and  
Investors to Drive Growth and Equity



# Our candidate network centers geographic and demographic diversity to advance equitable solutions

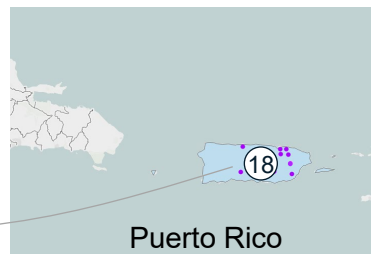
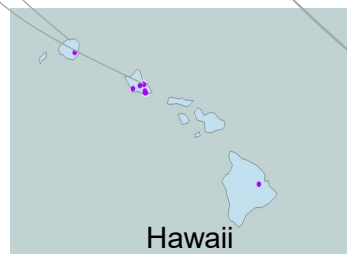
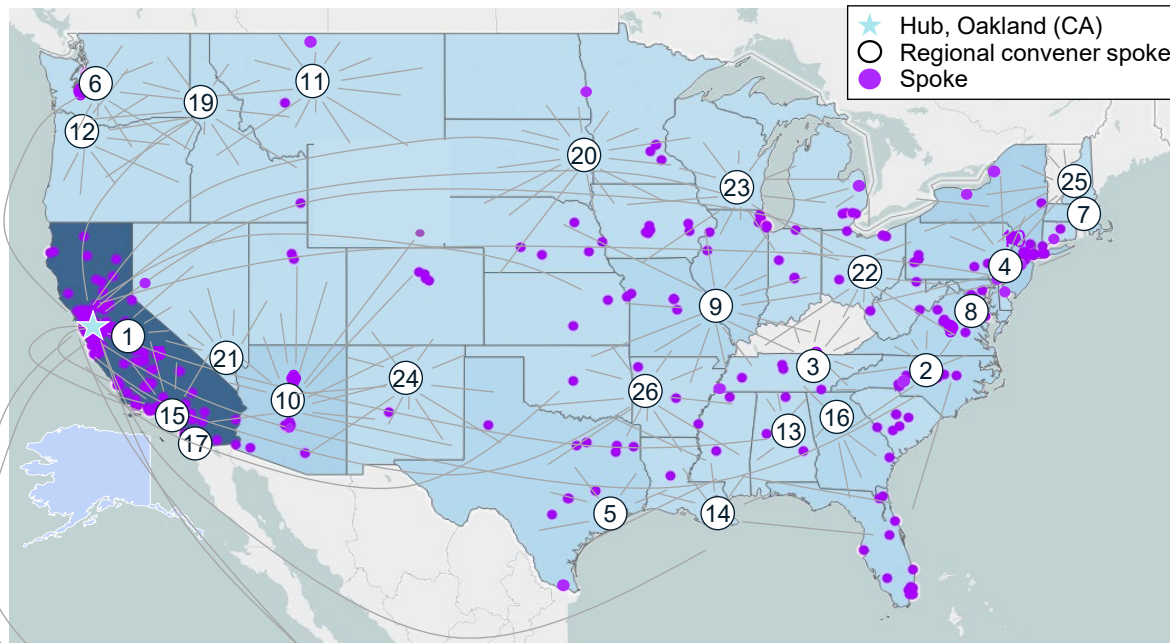


Health **BRIDGE**

- **170+ member spokes across the US** including Hawaii, Alaska and Puerto Rico
- **7,000+ unique locations**

Regional Convener spokes will partner closely to

- **Advise the hub on the unique health challenges** that exist across respective regions
- Advise hub on **needs, expertise, and capabilities** existing in the region
- Hold at **least 2 in-person events per year** with the regional ecosystem (open to all spokes in the region)
- Attend a **monthly check-in with hub and other regional conveners**, including rotating meeting hosts among the regional conveners to provide feedback on consortium progress (open to all current and potential spokes)



## Regional Conveners

1. UC Merced
2. North Carolina Research Campus
3. University of Tennessee Health Science Center-Oak Ridge National Lab Center for Biomedical Informatics
4. University City Science Center
5. Texas Medical Center (TMC)
6. Washington State Academy of Sciences
7. Biolabs
8. America's Frontier Fund
9. BioSTL
10. Greater Phoenix Economic Council
11. McLaughlin Biosciences Institute
12. Oregon Bioscience Association
13. Southern Research
14. Tulane Innovation Institute
15. Larta
16. Georgia Institute of Technology
17. UC San Diego
18. Universidad Ana G Méndez
19. WWAMI - University of Idaho
20. South Dakota State University
21. University of Nevada Las Vegas
22. Ohio State University Research Institute at Nationwide Children's Hospital
23. University of Wisconsin School of Medicine and Public Health
24. Los Alamos National Laboratory
25. Dartmouth College
26. Plug and Play

# Network members bring capabilities needed to support ARPA-H researchers and stakeholders



Each member brings a unique set of **skills, expertise, and resources** to the table, contributing to the collective strength of our collaborative network

Our network creates a **flywheel of diverse expertise, cutting-edge technologies, and deep industry knowledge** to drive impactful health innovations

HBC offers the following member spokes who bring the **capabilities to support the following notional activities:**

- Launch Lab Space: 70
- Entrepreneurial Mentorship and Support: 83
- Business Development and Networking: 20
- Commercialization Services: 61
- Education and Training: 70
- Immersion Experiences: 82
- Health Ecosystem Listening Sessions: 82
- Data Commons for Health Outcomes Measurement and Longitudinal Analysis: 110\*\*
- Other transition support: 164

With **capabilities across the entire innovation lifecycle**, we can leverage economies of scale to tackle challenges, forge strategic partnerships, and revolutionize healthcare for individuals and diverse communities

\*\*Data Commons capabilities are bi-directional, with key spokes providing tech infrastructure while all members provide data from communities

## Customers

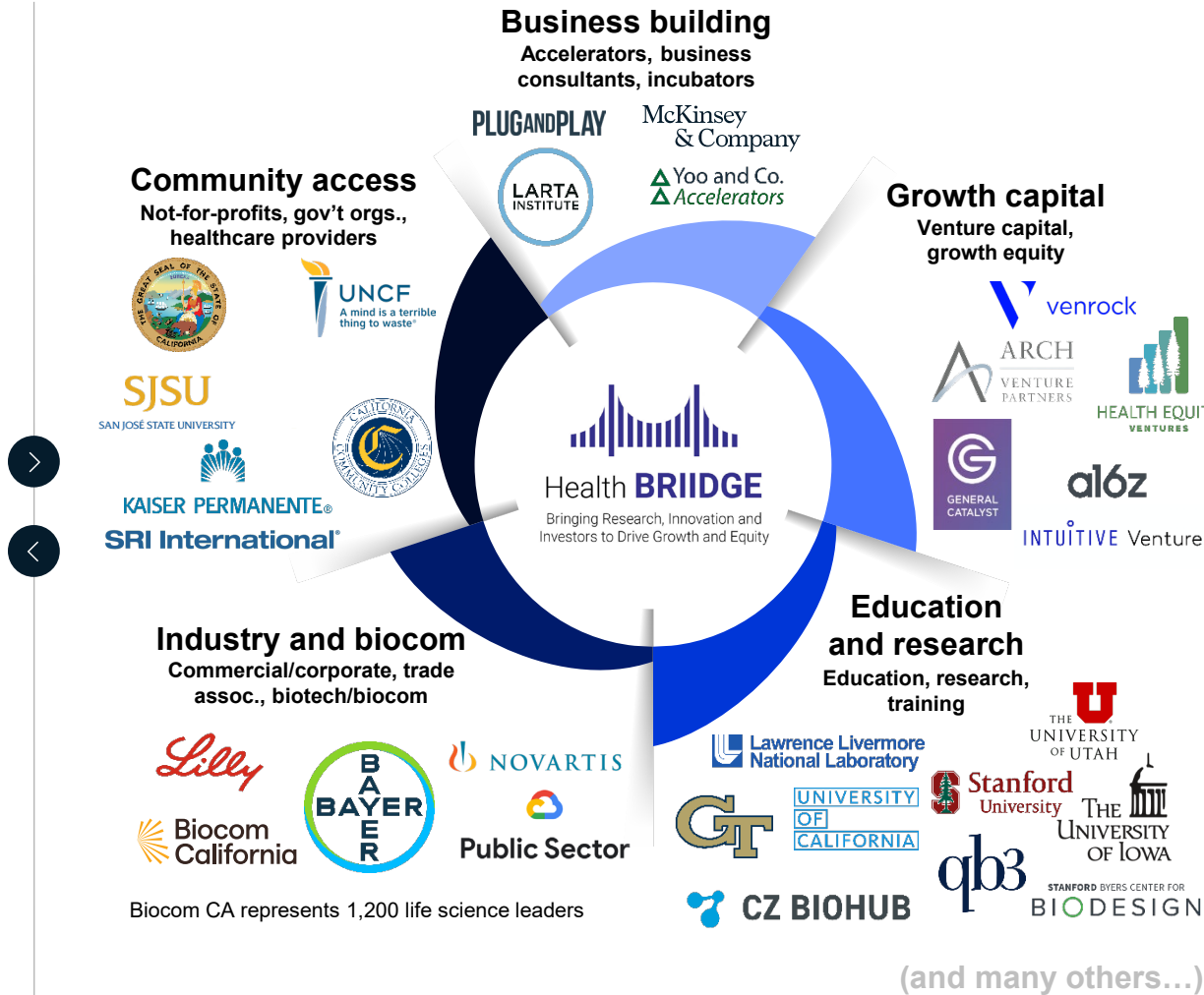
Healthcare Providers  
Patient Groups

## Performers

Academia  
Industry

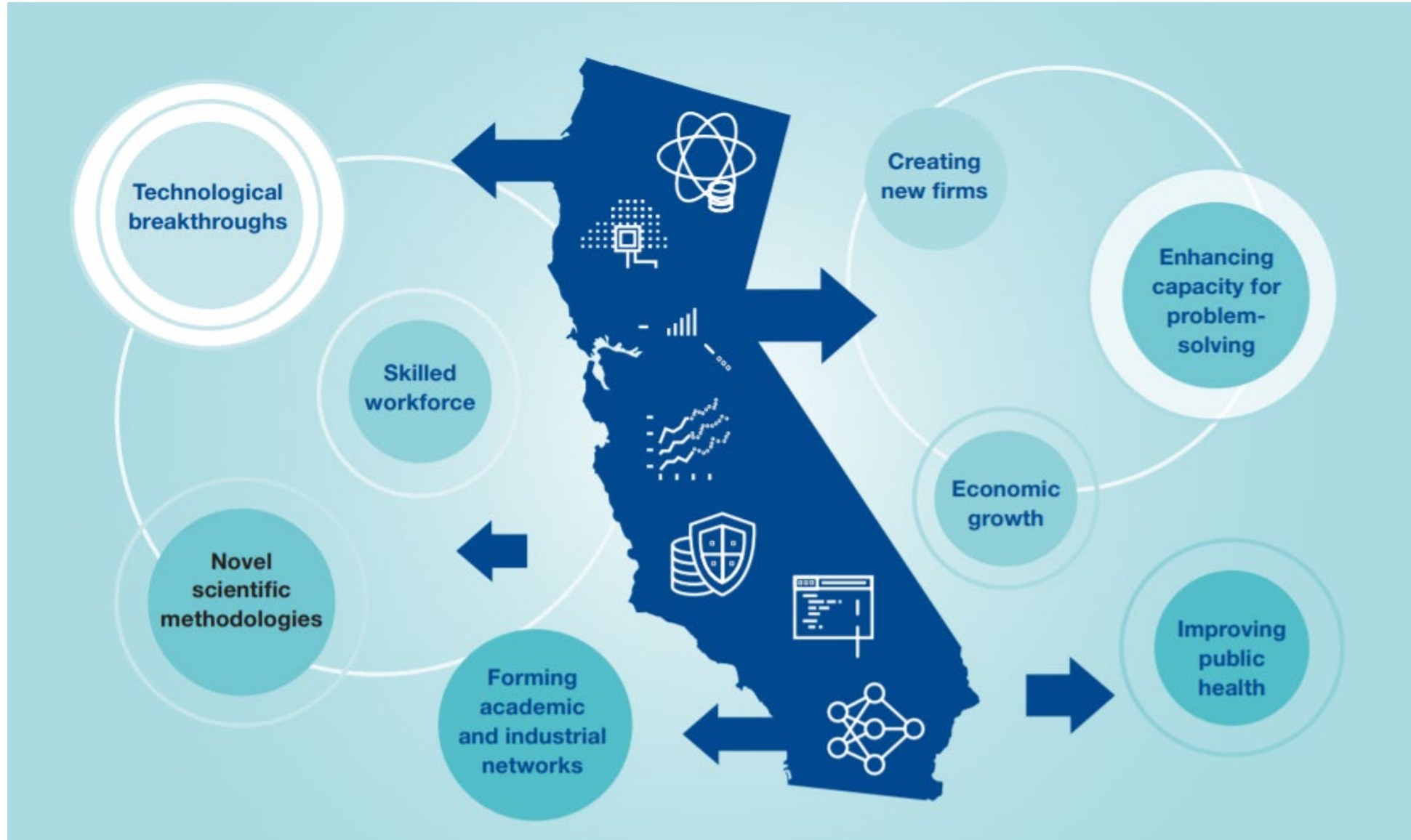
## Stakeholders

Federal Partners  
State and local partners  
Private Investors  
NGOs



(and many others...)

# Public benefits of research





# Thank you

California Governor's Office of Planning and Research  
julianne.mccall@opr.ca.gov | [www.opr.ca.gov/ciapm/](http://www.opr.ca.gov/ciapm/)