

# What the Marin Wildfire Prevention Authority is Doing for Marin

Informational Hearing on Wildfire Risk Reduction Efforts  
July 19, 2023

- **Mark Brown – Executive Officer**

# Marin County – Leading the Way in Fire Prevention



- Coordination of effort across 17 jurisdictions
- Full community support
- Recognizes climate change as an accelerant and environmental resilience as a solution
- Everyone has a role to play
- Comprehensive, long-term plan



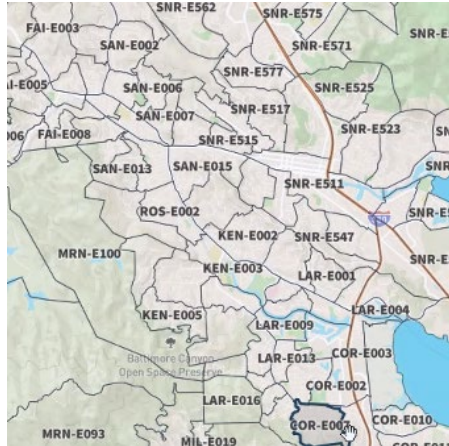


The Marin Wildfire Prevention Authority communities are informed, prepared, fire adapted, resilient and capable of withstanding a major fire limiting loss of life and major property damage while protecting our rich environmental diversity.



## Reduce Wildfire Fuels

Vegetation Management and Local Wildfire Prevention Mitigation



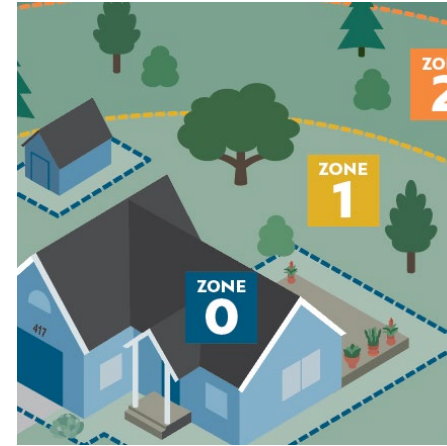
## Improve Evacuation Systems

Wildfire Detection, Alert, and Evacuation Program Improvements



## Reduce Risks to Homes

Defensible Space Evaluations (1/3 annually) and Home Hardening



## Educate the Public

Public outreach and education about fire prevention, preparedness, and risk reduction



## Provide Grants to Residents

Grants to modify homes and partnerships to collaborate and augment funds



Program Area	% of funds
<b>JPA Core: Cross-Jurisdictional Projects</b> Wildfire Detection & Evacuation Program Improvements, Veg Management/Fire Hazard Reduction, Grants Management, Public Education (Fire Safe Marin)	<b>60%</b>
<b>Defensible Space Evaluations and Home Hardening</b> (agencies can administer)	<b>20%</b>
<b>Community-Level Wildfire Prevention Mitigation</b> Local jurisdiction fire prevention issues with no funding. Enhanced fire patrols for problem areas, additional fire hazard reduction work, evac route parking issues	<b>20%</b>

2020-2030: **10-year term**  
~\$20 MM revenue per year

# Everyone Has a Role to Play



The Marin Wildfire Prevention Authority leads the development of fire adapted communities using sound scientific, financial, programmatic, ecological practices, vegetation management, community education, evacuation and warning systems with the support of its member and partner agencies.

## Land Managers

Manage landscapes for lowered fuel loads, lower fire intensity and ecological resiliency to fire.

## Marin Residents

Modify homes to be more fire resistant. Be prepared and subscribe to alerts.

## Civic Leaders

Develop laws and policies in support of fire prevention, preparedness and risk reduction.

## First Responders

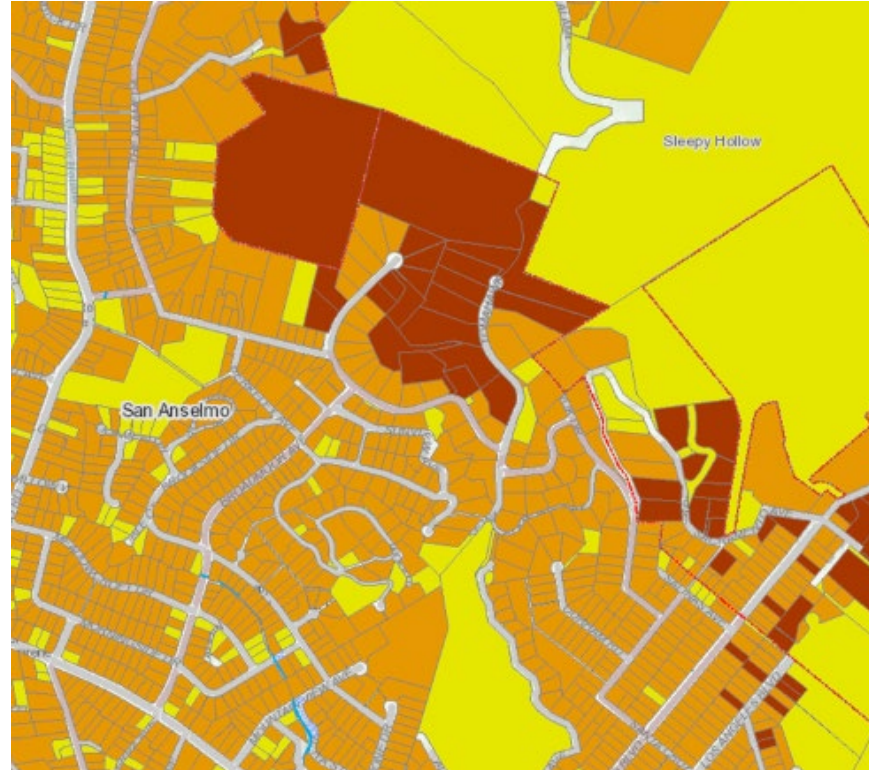
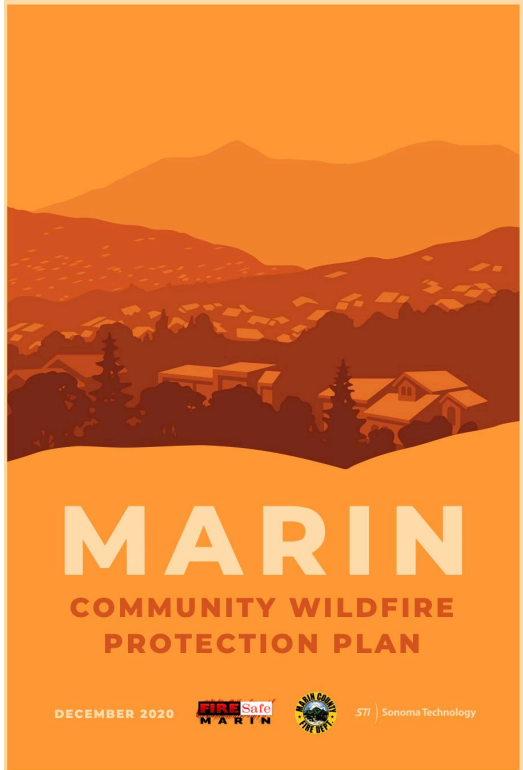
Craft fire prevention, preparedness, and emergency response plans. Educate community.

## Developers & Business Owners

Don't build in high-risk areas. Build with fire-resistant materials.



# Leading the Development of a Fire Adapted Marin

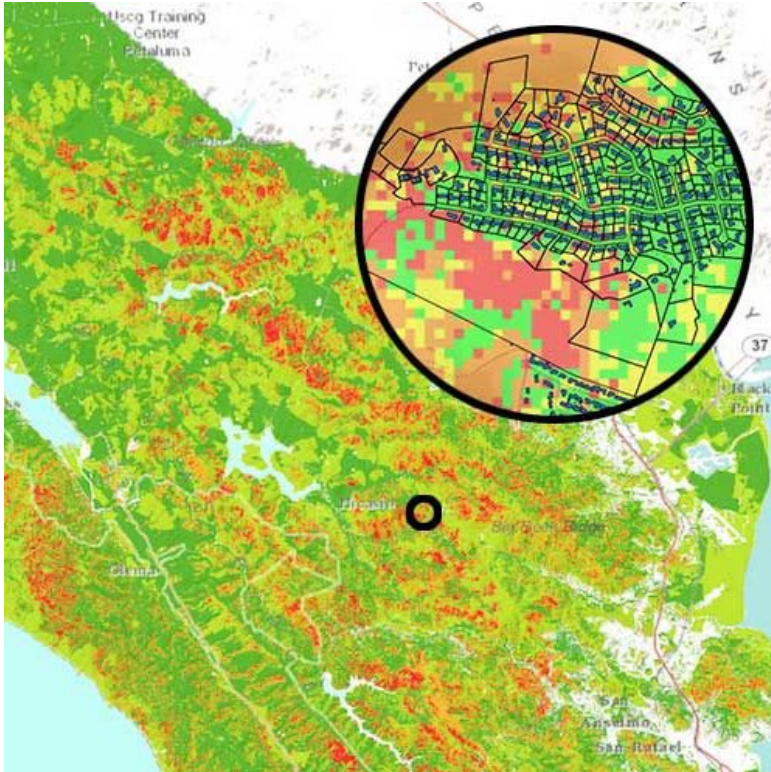


**Marin County CWPP:** Provides county-wide framework for MWPA's annual work plans and investments—updated annually.

- **LIDAR data:** funded by a 2019 federal grant
- Conducted a **Fire Risk Assessment for every parcel and home** in Marin
- Identifies **critical hazards & investments needed to reduce risks**



## Emphasizing importance of individual homes in preventing disaster



Parcel-level data



Harden Homes



Defensible Space

*Grants to help low-income residents and those with access and functional needs to get it done*

# Defensible Space Evaluations

- Nearly 34,000 inspections performed in 2022 (approximately 80,000 residential properties)
- 60% took action
- Direct Connect to IBHS Wildfire Prepared Home Designation
- Safer from Wildfire

7/27/2023



# Resident Grant Programs

- Defensible Space Grants:
  - Up to \$1,000 per property – no match required.
- Home Hardening Grants:
  - Up to \$5,000 per property – some items require 50% match.
- \$800,000 allocated for FY 23/24 & \$800K for prior, FY 22/23
- Statistics – for every dollar spent by the MWPA, two dollars are spent by residents.



MWPA Grants may be available to help ([learn more](#))

[Click here to start your application](#)

# Chipper Days

- Direct link from our Defensible Space Evaluation Program
- 2022 Season:
  - 3,307 pick-ups and removal
  - 10,507 yards removed (1,051 dump trucks)
- 2023 Season – pickups started May 15:
  - All residents get 5 pick-up days
  - Online pre-registration required: <https://reserve.chipperdays.com/marin>




## Upcoming Chipper Events

Marin Wildfire Prevention Authority provides free “**chipper days**” for residents living in Marin’s Wildland Urban Interface areas.

[REGISTER FOR FREE PICK-UP](#)



 WEBINAR

## EVACUATIONS & WARNINGS: HOW TO SURVIVE A WILDFIRE

Tuesday, August 25 @ 6pm

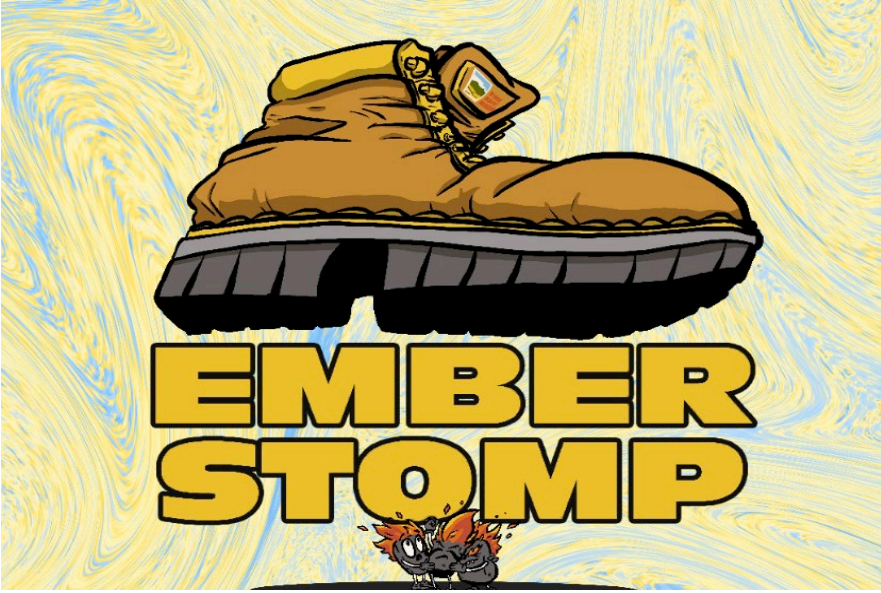
*It's Time to Prepare!*



**PREPARE FOR WILDFIRE  
COMMUNITY WORKSHOPS**

MARIN COUNTY

**FIRE Safe  
MARIN**       **MARIN WILDFIRE  
PREVENTION AUTHORITY**



# Evacuation Route Clearing



**BEFORE**



**AFTER**





Photo: Alan Dep, Marin Independent Journal  
Lassen Fire, September 2021, San Rafael, California

- Ingress/egress risk assessment
- App development: Fire risk analysis to help prioritize projects
- Roadway terrain and condition
- Traffic patterns
- Number of cars
- Pinch points
- Sync traffic preemption devices (i.e., green lights in a certain direction)
- Demographics of community (such as access and functional needs)

# Prescribed Herbivory





# Shaded Fuel Breaks

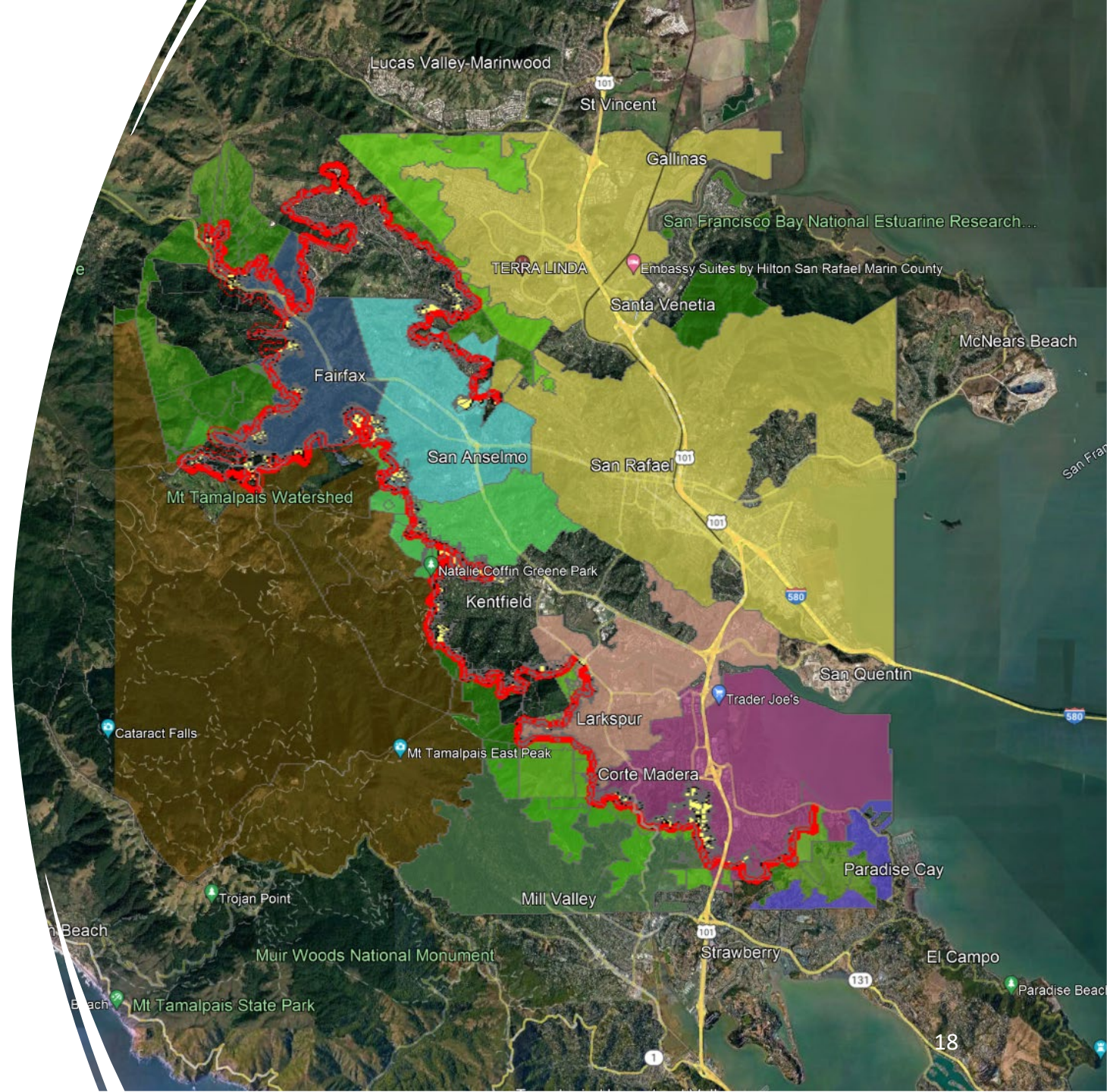
- Shaded Fuel Breaks along the Wildland Urban Interface.
- 100'-300' Defensible Space.
- Several levels of community engagement.
- What does success look like?
- Where are we building them?
- How do we design these fuel breaks?
- How do we construct them?
- How do we maintain them?



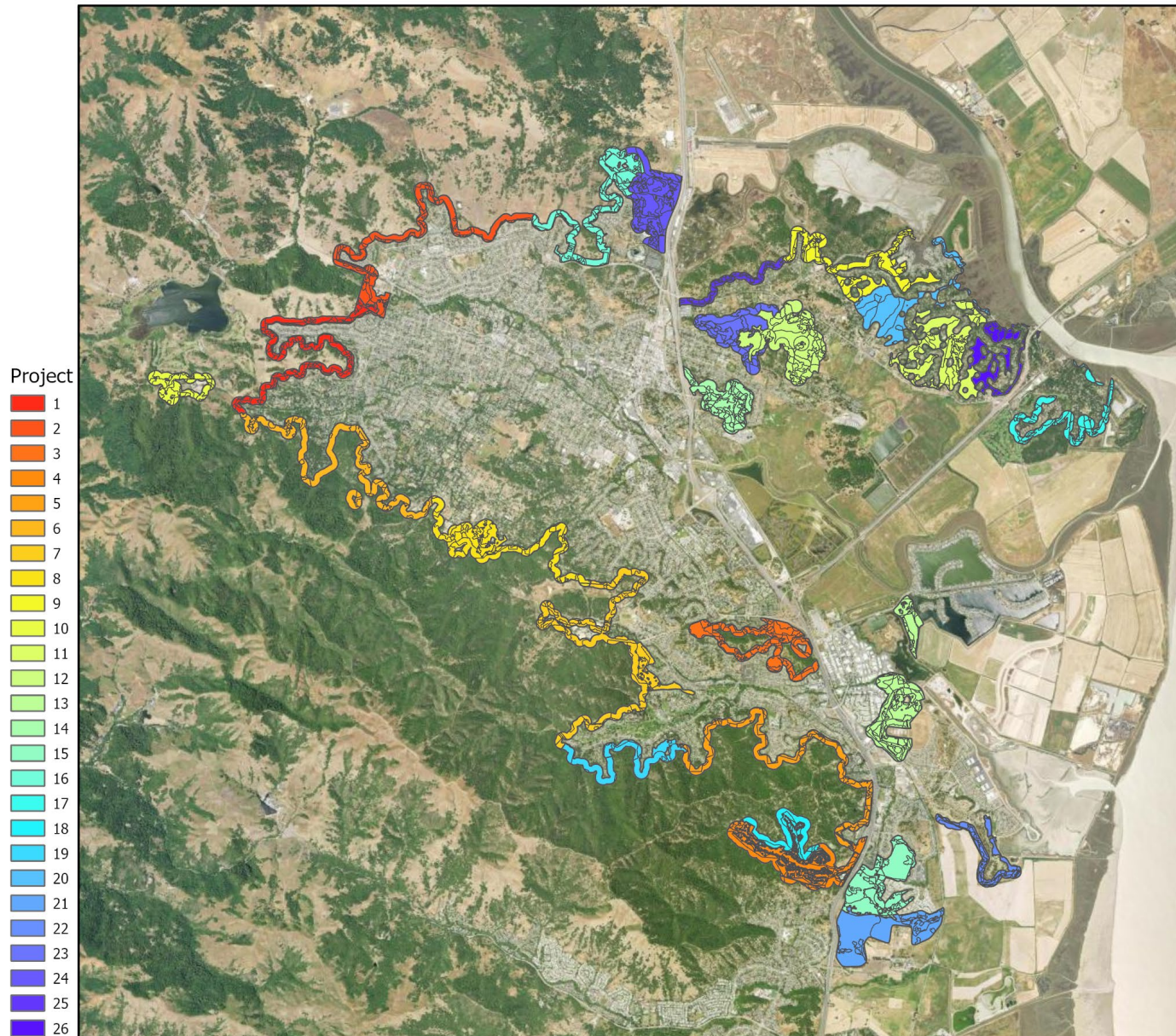
# Greater Ross Valley Shaded Fuel Break

---

- 38 miles in the Ross Valley
- Phase 1 is completed (16 miles)



# Prioritization Based on Modeling Outcome



## Prioritization Results

- Based on fire threat risk and community exposure
- Modeling results were reviewed for water features and vegetation types
- Still undergoing final QA/QC
- Prioritization is one tool to support Novato Fire District in determining where to work first. Other considerations also help determine where to begin vegetation management work.

An aerial photograph of a city, likely San Jose, California, showing a mix of residential and commercial buildings, a river, and mountains in the background. A large, semi-transparent green rectangular box is overlaid in the center of the image.

**Questions?**