

Site Cleanup Program Analysis & Response to Sea Level Rise

Karen Mogus, Chief Deputy Director
State Water Board



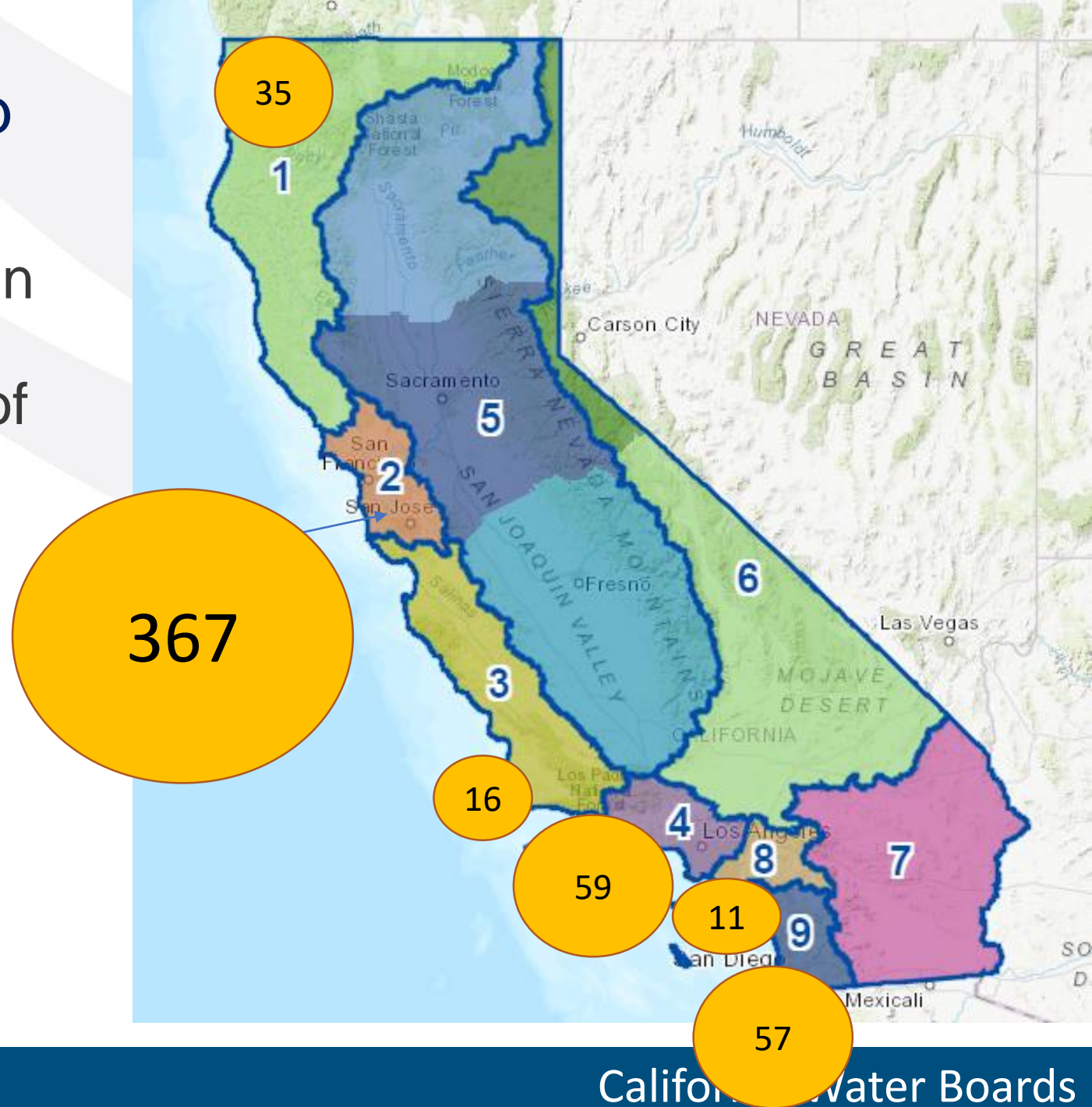
October 2, 2024

Number of Cleanup Sites Impacted by Region

Region	2 ft SLR	3 ft SLR	4 ft SLR	5 ft SLR
1-North Coast	6	12	23	35
2-SF Bay	143	207	269	367
3-Central Coast	0	0	2	16
4-Los Angeles	29	39	46	59
5-Central Valley	0	0	0	0
6-Lahontan	0	0	0	0
7-Colorado R.	0	0	0	0
8-Santa Ana	7	9	10	11
9-San Diego	36	37	45	57

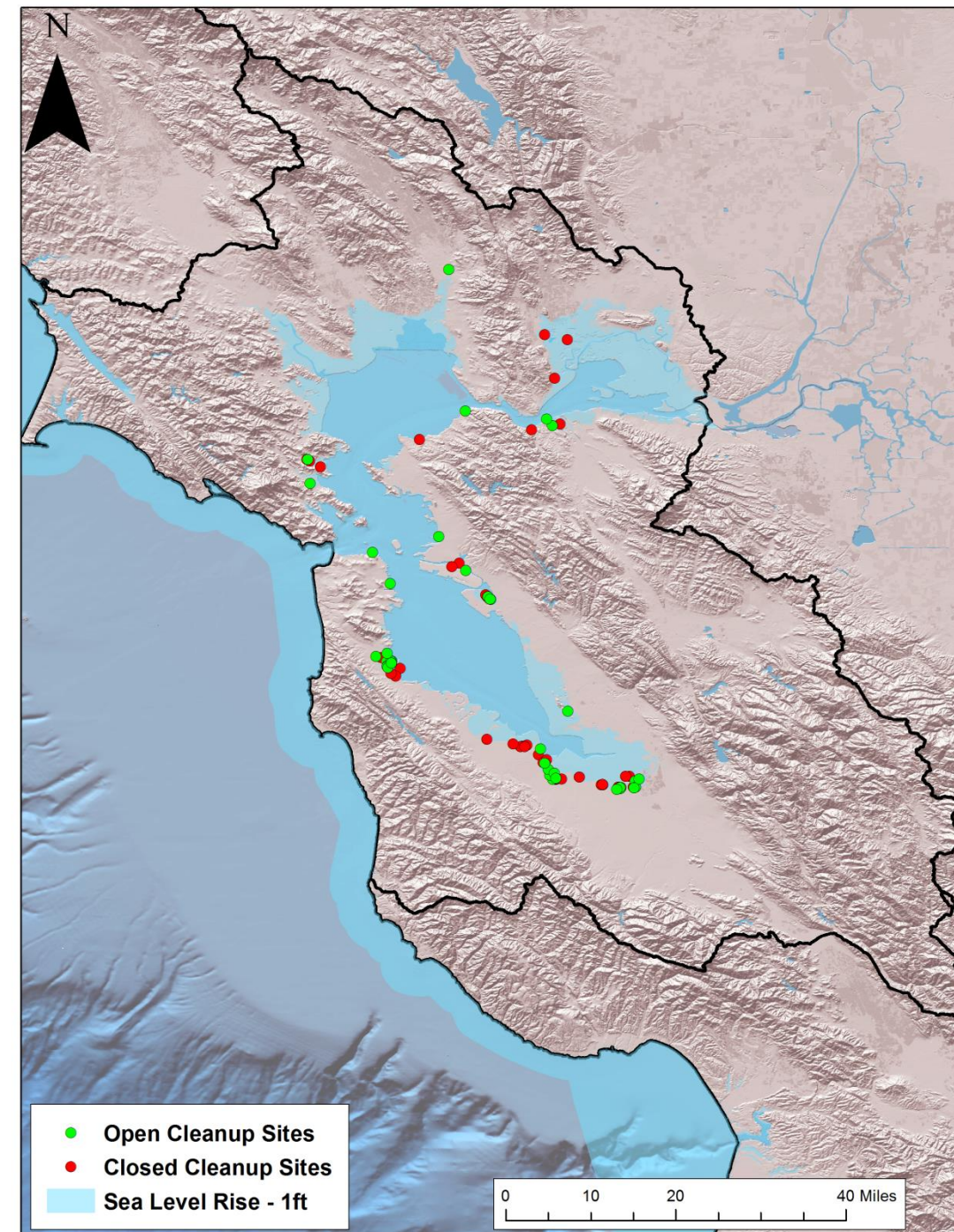
GIS Evaluation for Cleanup Programs

- Map shows total number of open and closed site cleanup sites potentially inundated by 5 feet of sea level rise.
- All coastal regions impacted, inland impacts not captured by this model.
- San Francisco Bay Region has the greatest number of sites potentially impacted.



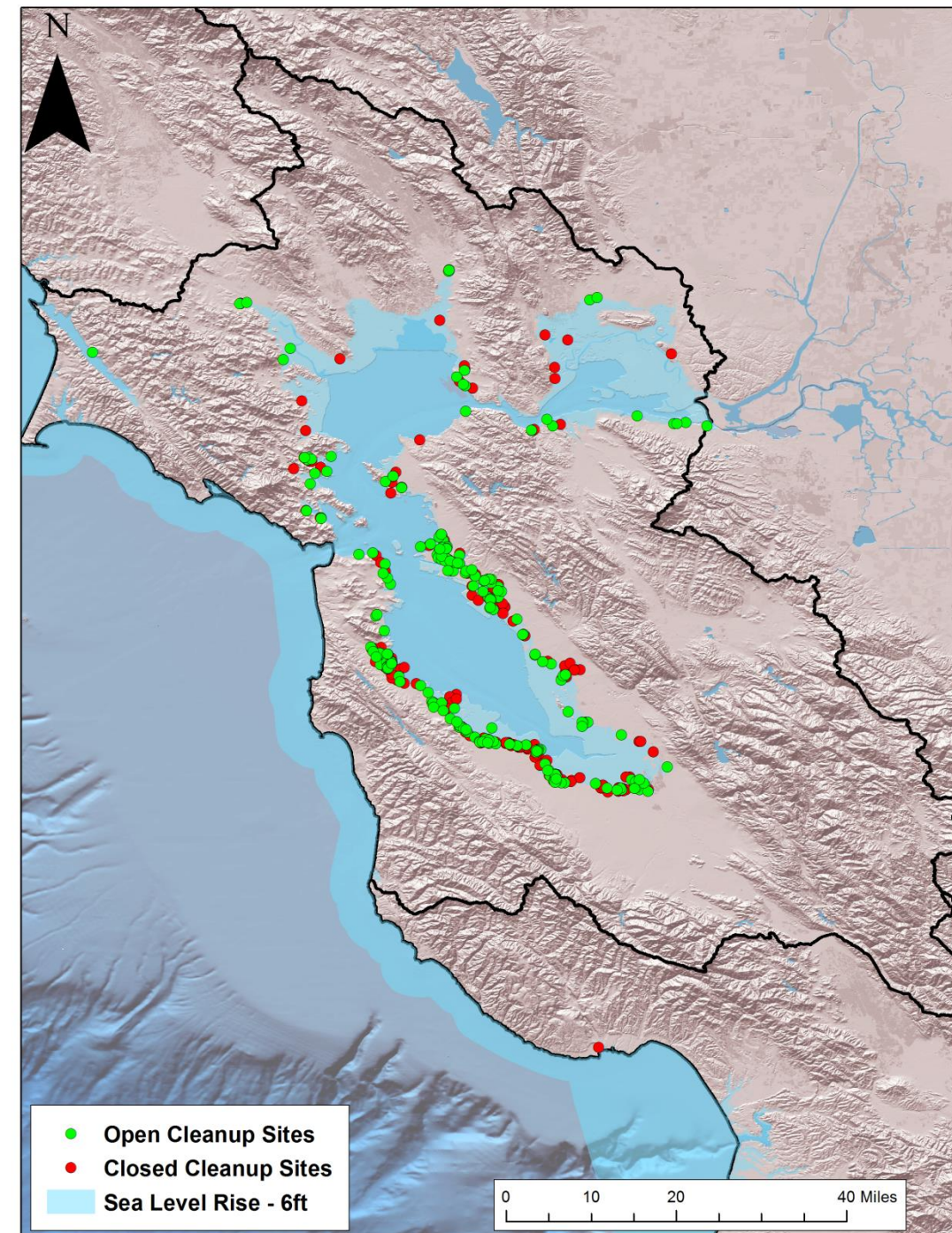
SF Bay Region

- **One foot of sea level rise (SLR)** would impact:
 - 53 open and 47 closed cleanup cases



SF Bay Region

- One foot of sea level rise would impact:
 - 53 open and 47 closed cleanup cases
- **Six feet** of sea level rise would impact:
 - 250 open and 204 closed cleanup cases



Thank you!

Questions?